



## Cipremont® piano coaster

for Piano, E-Piano and Grand Piano

### Product specifications

TYPE LAMELLA FOOT		
Description	Standard version for pianos without castors	
Details	Black lamella spring pad on reddish brown base plate: 63 x 35 mm <sup>2</sup>	

TYPE LAMELLA PLATE		
Description	Standard version for pianos with castors	
Details	Circular housing Ø 75 mm, transparent (crystal clear), with lamellar spring inlay in black	

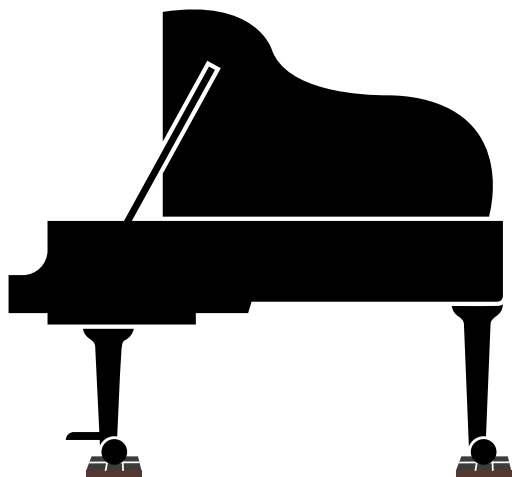
TYPE TOP PLATE		
Description	Enhanced version for pianos and grand pianos with castors	
Details	Directional compression-shear air-spring cushion, mahogany-coloured or transparent square casing 70 x 70 mm <sup>2</sup> , with lamella spring pad inlay in black	



## Cipremont® piano coaster for Piano, E-Piano and Grand Piano

### Installation Instructions

#### Cipremont® Lamella plate and Cipremont® Top plate



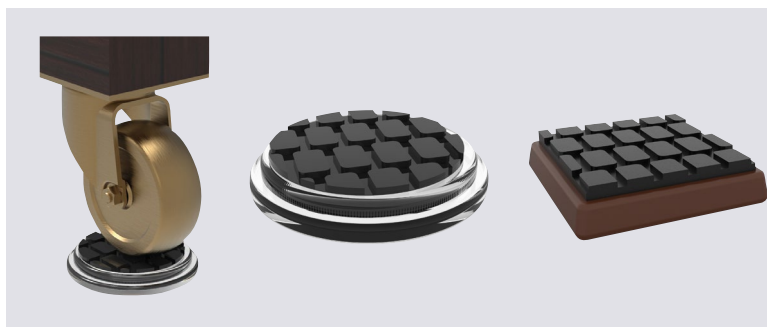
Permanently elastic coasters for piano leg castor

Standard version

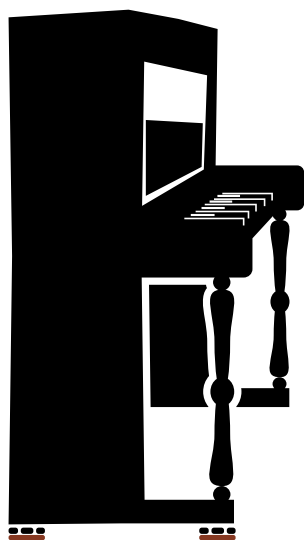
Lamella plate: Ø 75 mm

Top plate : 70 x 70 mm<sup>2</sup>

The lamellas in the spring pad are arranged in parallel rows in such a way that a continuous groove is formed along the central axis. The Cipremont® Lamella plate / -top plate works best, if it is placed under the piano castor such that the castor roller presses itself like a wedge into the groove in the lamella. In this way, the piano will be elastically restrained and will not move (see figure).



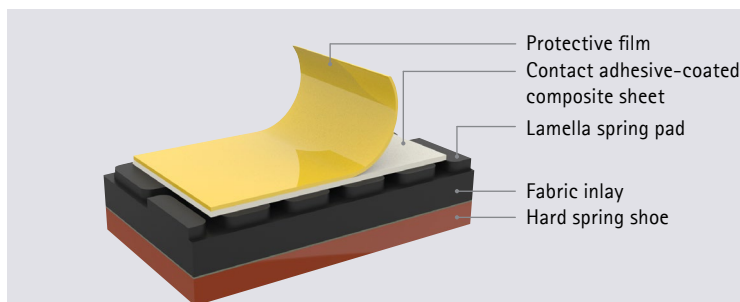
#### Cipremont® Lamella foot



Permanently elastic coasters for piano side wall

Standard version: 63 x 35 mm<sup>2</sup>

A contact adhesive-coated composite sheet is applied to the Cipremont® Lamella foot in the factory. After removing the protective film, the Cipremont® Lamella foot can be positioned under the piano side wall. No other measures are necessary (see figure).



The contents of this publication are the result of many years of research and experience gained in the application of this technology. All information is given in good faith; it does not represent a guarantee with respect to characteristics and does not exempt the user from testing the suitability of products and from ascertaining that the industrial property rights of third parties are not violated. No liability whatsoever will be accepted for damage – regardless of its nature and its legal basis – arising from advice given in this publication. We reserve the right to make technical modifications in the course of product development.

© Copyright – Calenberg Ingenieure GmbH – 2020

Version 0

15 May 2020

Calenberg Ingenieure GmbH | Am Knübel 2-4 | 31020 Salzhemmendorf | Germany | [info@calenberg-ingenieure.de](mailto:info@calenberg-ingenieure.de) | [www.calenberg-ingenieure.de](http://www.calenberg-ingenieure.de)